



COLLEGE STATION
HIGH SCHOOL

2017-18

COUGAR CLIFF NOTES

Pursuing Perfection | Achieving Excellence

WHO'S WHO



ADMINISTRATION

Principal	Tiffany Parkerson
Assistant Principal (A-D)	Chris Southard
Assistant Principal (E-K)	Kim Rodgers
Assistant Principal (L-Q)	Patty Ayala
Assistant Principal (R-Z)	Trae Davis

GUIDANCE AND COUNSELING

Counselor (A-D)	Anne Hoffman
Counselor (E-K)	Maria Crayton-Haliburton
Counselor (L-Q)	Stacie LePage
Counselor (R-Z)	Valarie Reed
Transcripts & Scholarships	Jeanna Knott
Registrar	Dee Dee Starrett

SUPPORT SERVICES

Principal's Secretary	Victoria Hester
Asst. Principal's Secretary	Lori Reismeier
Office Assistant	Rachel Tydlacka
Nurse	Paula Gardner
Librarian	Tina SanAngelo
Receptionist	Chenika Brooks
Attendance	Miranda Broadus
Attendance	Julie Middleton
Testing Coordinator	Randi Costenbader
Bookkeeper	Danielle Valadez
School Resource Officer	Martha Smith

DEPARTMENT CHAIRS

Athletic Coordinator	Steve Huff
Career & Technology	Clarissa Riedel
English	Courtney Wellmann
Fine Arts	Erik Eaks
Foreign Languages	Michelle Vizquerra
Math	Mary Selcer
Physical Education	Megan Symank
Science	Josh Munson
Special Education	Matt Barone
Social Studies	Jessica Kouba

GENERAL INFORMATION

Address	4002 Victoria Ave. College Station, TX 77845
Phone	(979) 694-5800
Fax	(979) 764-5577
Website	http://cshs.csisd.org

COUGAR QUALITIES



College Station High School is a premier educational institution in which the Cougar family of faculty, staff, parents, and students are united in a passionate pursuit of excellence so that students achieve distinction by living the Cougar Qualities.

Character

*Do the right thing
Be honest and trustworthy
Exhibit high morals*

Outstanding Leadership

*Make good decisions
Motivate and inspire others
Make a positive impact on society*

Understanding of Others

*Respect yourself and others
Be open-minded to positive attributes
Exhibit positive communication skills*

Goal-oriented

*Dare to dream
Reach high
Strive toward success*

Academic Excellence

*Acquire knowledge and skills to be successful in life
Be motivated by your self-worth
Passionately pursue perfection*

Responsibility

*Take initiative
Exercise self-discipline
Honor your obligations*

Service

*Make a difference in your home, school, and community
Be involved and engaged
Be a part of something bigger than yourself – pay it forward*

FIGHT SONG & ALMA MATER

FIGHT SONG

Go College Station

**Break right through
that line**

With our colors flying,

**We will cheer you all the
time,**

Go Cou-gars!

Go College Station

Fight for Victory

**Spread far the fame of
our great name**

And go... win that game!

ALMA MATER

**We are the Cougars, proud
and bold**

**True to our school always
we hold**

**We are the Cougars, the
purple and black**

**Honor and loyalty we do
not lack**

CSHS—to you we'll be true

CSHS—our faith we renew

CSHS BELL SCHEDULES

Regular Bell Schedule			
	1 st Period	8:25-9:15	
	2 nd Period	9:20-10:10	
	3 rd Period	10:15-11:05	
<u>A Lunch</u>	<u>B Lunch</u>	<u>C Lunch</u>	<u>D Lunch</u>
L: 11:05-11:35	Adv.: 11:10-11:35	4 th : 11:10-12:05	4 th : 11:10-12:05
Adv.: 11:40-12:10	L: 11:35-12:05	L: 12:05-12:35	Adv.: 12:05-12:35
4 th : 12:10-1:05	4 th : 12:10-1:05	Adv.: 12:40-1:05	L: 12:35-1:05
	5 th Period	1:10-2:00	
	6 th Period	2:05-2:55	
	7 th Period	3:00-3:50	

Morning Activity Schedule			
	1 st Period	8:25-9:10	
	2 nd Period	9:15-10:00	
Activity 10:05-10:30			
	3 rd Period	10:35-11:20	
<u>A Lunch</u>	<u>B Lunch</u>	<u>C Lunch</u>	<u>D Lunch</u>
L: 11:20-11:50	Adv.: 11:25-11:50	4 th : 11:25-12:20	4 th : 11:25-12:20
Adv.: 11:55-12:25	L: 11:50-12:20	L: 12:20-12:50	Adv.: 12:25-12:50
4 th : 12:25-1:20	4 th : 12:25-1:20	Adv.: 12:55-1:20	L: 12:50-1:20
	5 th Period	1:25-2:10	
	6 th Period	2:15-3:00	
	7 th Period	3:05-3:50	

Afternoon Activity Schedule			
	1 st Period	8:25-9:10	
	2 nd Period	9:15-10:00	
	3 rd Period	10:05-10:50	
<u>A Lunch</u>	<u>B Lunch</u>	<u>C Lunch</u>	<u>D Lunch</u>
L: 10:50-11:20	Adv.: 10:55-11:20	4 th : 10:55-11:50	4 th : 10:55-11:50
Adv.: 11:25-11:55	L: 11:20-11:50	L: 11:50-12:20	Adv.: 11:50-12:20
4 th : 11:55-12:50	4 th : 11:55-12:50	Adv.: 12:25-12:50	L: 12:50-12:50
	5 th Period	12:55-1:40	
	6 th Period	1:45-2:30	
	7 th Period	2:35-3:20	
Activity 3:20-3:50			

SCHOOL CALENDAR

COLLEGE STATION INDEPENDENT SCHOOL DISTRICT 2017-18 SCHOOL YEAR CALENDAR

JULY 17						
S	M	T	W	T	F	S
						1
2	3	4	5	6	7	8
9	10	11	12	13	14	15
16	17	18	19	20	21	22
23	24	25	26	27	28	29
30	31					

AUGUST 17						
S	M	T	W	T	F	S
			1	2	3	4
5	6	7	8	9	10	11
12	13	14	15	16	17	18
19	20	21	22	23	24	25
26	27	28	29	30	31	

SEPTEMBER 17						
S	M	T	W	T	F	S
						1
2	3	4	5	6	7	8
9	10	11	12	13	14	15
16	17	18	19	20	21	22
23	24	25	26	27	28	29
30						

July	4	Holiday
August	16-25	Staff Development
	28	First Day of School
September	4	Holiday
October	9	Staff Development/ Student Holiday
November	22-24	Holiday
December	22	Early Release
	25-29	Winter Break
January	1-4	Holiday
	5	Staff Comp Day/Student Holiday
	15	Holiday
February	19	Staff Development/ Student Holiday
March	12-16	Spring Break
	30	Holiday
	30	Weather Makeup Day
April	2	Staff Development/Student Holiday
May	28	Holiday
	31	Last Day of School
June	1	Weather Makeup Day
	1	Staff Development

OCTOBER 17						
S	M	T	W	T	F	S
1	2	3	4	5	6	7
8	9	10	11	12	13	14
15	16	17	18	19	20	21
22	23	24	25	26	27	28
29	30	31				

NOVEMBER 17						
S	M	T	W	T	F	S
			1	2	3	4
5	6	7	8	9	10	11
12	13	14	15	16	17	18
19	20	21	22	23	24	25
26	27	28	29	30		

DECEMBER 17						
S	M	T	W	T	F	S
						1
2	3	4	5	6	7	8
9	10	11	12	13	14	15
16	17	18	19	20	21	22
23	24	25	26	27	28	29
30	31					

JANUARY 18						
S	M	T	W	T	F	S
	1	2	3	4	5	6
7	8	9	10	11	12	13
14	15	16	17	18	19	20
21	22	23	24	25	26	27
28	29	30	31			

FEBRUARY 18						
S	M	T	W	T	F	S
				1	2	3
4	5	6	7	8	9	10
11	12	13	14	15	16	17
18	19	20	21	22	23	24
25	26	27	28			

MARCH 18						
S	M	T	W	T	F	S
				1	2	3
4	5	6	7	8	9	10
11	12	13	14	15	16	17
18	19	20	21	22	23	24
25	26	27	28	29	30	31

APRIL 18						
S	M	T	W	T	F	S
1	2	3	4	5	6	7
8	9	10	11	12	13	14
15	16	17	18	19	20	21
22	23	24	25	26	27	28
29	30					

MAY 18						
S	M	T	W	T	F	S
			1	2	3	4
5	6	7	8	9	10	11
12	13	14	15	16	17	18
19	20	21	22	23	24	25
26	27	28	29	30	31	

JUNE 18						
S	M	T	W	T	F	S
						1
2	3	4	5	6	7	8
9	10	11	12	13	14	15
16	17	18	19	20	21	22
23	24	25	26	27	28	29
30						

1st Semester: 80 Days 35,060 Minutes
 2nd Semester: 94 Days 41,220 Minutes
 Full Year: 174 Days 76,280 Minutes

LEGEND

- Holiday
- Staff Development/
Student Holiday
- Begin/End Nine Weeks
K-4
- Begin/End Six Weeks
5-12
- Staff Comp. Day/
Student Holiday
- Early Release
- Weather Makeup Day

TESTING DATES

PSAT (all 10th & 11th graders)

October 11, 2017

SAT

October 7, 2017

November 4, 2017

December 2, 2017

March 10, 2018

May 6, 2018

June 2, 2018

ACT

September 19, 2017

October 28, 2017

December 9, 2017

February 10, 2018

April 14, 2018

June 9, 2018

EOC Testing (STAAR)

December 4-7, 2017—**Retests**

April 10, 2018—**English I**

April 12, 2018—**English II**

May 8-9, 2018—**Algebra I, Biology,
US History**

AP Testing

May 7-11, 2018

May 14-18, 2018



FAQ

1. Where do I go in the morning before school starts?

All students are to stay on the first floor upon entering the building unless a student has a pass to go to tutorials. A bell will sound at 8:15 a.m. allowing students to proceed to first period which begins at 8:25 a.m.

2. What about after school? Where do I go?

School ends at 3:50 p.m. All hallways are to be clear by 4:00 p.m. Students participating in after school activities or attending tutorials should be in their designated area by this time.

3. What lunch / advocate time do I have?

Your lunch / advocate time is determined by your 4th period class. All 4th period teachers will communicate the appropriate lunch and advocate time for his or her class on the first day of school.

4. When can I use my cell phone?

Electronic devices will be allowed before and after school, in the hallways during passing periods, and at lunch. Audio from electronic devices should only be heard by the user through headphones. Students should abide by the one ear bud in, one ear bud out rule so that they can follow any directions and respond to staff members. The teacher in the classroom has the final say on procedures in the classroom.

5. Where are the bathrooms?

Restrooms are located at the end of each academic wing on the first, second, and third floors. There are also restrooms located near the cafeteria, gymnasiums, auditorium, and in the Career and Technology wing.

6. How long are the passing periods?

Passing period is 5 minutes. Music will be played for 4 minutes. When the music stops, students have 1 minute to get inside their next classroom.

7. Can I wear my ID on a clip or does it have to be on a lanyard?

Student IDs are to be worn on a school issued lanyard only.

8. Can I take my lunch from the cafeteria to my teacher's classroom?

Food and drinks are only allowed in the cafeteria and designated concession areas during extracurricular activities. There is to be no food or drink in any other areas of the building such as classrooms, the commons, auditorium, library, or gyms. Water or re-hydrating sports drinks are allowed throughout the building in a transparent container. Exceptions to this expectation must receive administrative approval.

9. Where is student parking located?

Once students have acquired a parking tag from the office, they may park in the designated student parking lots. There are designated student parking lots located outside the athletic wing and fine arts wing on either end of the building. Numbered spots indicate a reserved space.

10. What if I have questions about my schedule or classes?

Most schedule issues will be resolved at schedule pick up. Any questions regarding your schedule from the first day of school on can be remedied by arranging an appointment with your designated counselor. Students should sign up with the counseling secretary and the counselor will call the student down when the counselor has availability. Please refer to page 1 for counselor alphabetical assignments.

DRESS CODE

The district's dress code is established to teach grooming and hygiene, prevent disruption, and minimize safety hazards. Students and parents may determine a student's personal dress and grooming standards, provided that they comply with the following:

Students shall come to school clean and neat, wearing clothing and exhibiting grooming that will not be a health or safety hazard to themselves or others. School Board policy prohibits any clothing that in the principal's judgment may reasonably be expected to cause disruption of or interference with normal school operations (Board Policy FNCA).

The dress code for the District shall be as follows until altered by the appropriate authority designated by the Board:

- A. ID cards are to be worn at all times. ID cards should be worn above the waist in the front of the body.
- B. Clothing should cover the body and should fit in such a manner as to promote the modesty of individuals.
 - 1. Shoes should be worn at all times.
 - 2. Clothing with distracting holes or tears with skin visible are not permitted.
 - 3. Clothing shall be such length and design to include a sleeve and covers the mid-section of the body.
 - 4. Sheer or see-through clothing requires a camisole or tanktop that covers the midriff underneath.
 - 5. Pants must fit at the waist.
 - 6. Hem lengths of dresses, skirts, shorts, skorts must be below each individual's fingertips. Clothing should meet fingertip length while at all times. If a student wears tight-fitting pants, he or she must also wear clothing over them which meets the fingertip requirement for length.
 - 7. Clothing shall not be worn which displays:
 - Offensive, obscene, vulgar, or suggestive pictures or slogans.
 - Pictures, symbols, or slogans associated with gang activity, or subversive groups or activities which incite violence or are deemed inappropriate for a school setting.
 - Pictures or advertisement for alcohol, drugs, or tobacco products including but not limited to beer, wine, liquor slogans, or registered trademarks of such companies.
 - 8. Sleepwear such as pajama pants is not allowed.
 - 9. Headwear is allowed for medical reasons or as a legitimate expression of a student's religious practice and faith. Hairnets, picks, combs, or rollers/curlers are not allowed to be worn in a student's hair on campus.
 - 10. Blankets should not be worn inside the building.

Teachers can send students that are out of dress code to the office at any time during the school day. If the principal determines that a student's grooming or clothing violates the school's dress code, the student will be given an opportunity to correct the problem. The principal/designated person will fill out the dress code violation documentation and send the student back to class with a signed copy once the dress code violation has been corrected. A dress code violation will be recorded. The teacher will use the issued documentation as admittance into class.

Students refusing to comply with principal request to conform to dress code will be sent to ISS for the remainder of the day, until the problem is corrected, or until a parent or designee brings an acceptable change of clothing to the school.

School owned clothing must be returned the following school day. If the clothing is not returned a fine will be assessed until the clothing is returned. In addition to this, if the violation is a hat, jewelry, or chain violation, the principal will confiscate the item. The confiscated item may be picked up after school. Items that are consistently confiscated will be kept by the assistant principal until the end of the school year. A student could receive several dress code violations in one day, if they make that choice. Each additional violation will result in the next level in the consequence continuum.

ELECTRONIC DEVICES

The use of electronic devices such as Kindles, Nooks, iPads, laptops/notebooks, cell phones, cameras, and similar items may be allowed by an individual teacher for student use during instruction; however, that use will only be for an approved educational purpose and only with the permission of a teacher at appropriate times in the lesson.

However, electronic devices shall not be visible or activated on campus by students except by permission from the school administrator or classroom teacher. ***The school is not responsible for the replacement of any confiscated, lost or stolen items.***

Important Information:

- The teacher in the classroom has the final say on procedures in the classroom. If he or she asks the student not to use your device, then the student must follow those directions. Access is available but not guaranteed for each classroom situation.
- If a student violates a teachers' classroom policy a referral will be submitted to the Assistant Principal.
- If your child chooses to not bring their device, he/she will still be able participate in the classroom activities.
- Users of the CSISD wireless network have filtered internet access just as they would on a district-owned device.
- By connecting to the CSISD wireless network, users accept the terms of the CSISD Responsible Use Guidelines, located in the Student Handbook.
- Electronic devices will be allowed in the hallways during passing periods and at lunch. Audio from electronic devices should only be heard by the user through headphones. Students should abide by the one ear bud in, one ear bud out rule so that they can follow any directions and respond to staff members.

Responsibilities:

- The technology devices students bring to school are their sole responsibility.
- The campus or district assumes no responsibility for personal devices if they are lost, loaned, damaged or stolen.
- Each student is responsible for his/her own device: set-up, maintenance, charging, and security. Staff members will not store student devices at any time, nor will any District staff diagnose, repair, or work on a student's personal telecommunication device.
- Each student is responsible for bringing devices to school fully charged and in good working order.
- Students must keep devices in silent mode or vibrate mode while riding school buses and on school campuses, unless otherwise allowed by a teacher/staff member.

EXPECTATIONS

Cumulative consequences for violations of tardies, IDs, electronic devices, cell phones, loitering in hallway during transition times, unapproved food/drink in hallway, PDA, and dress code.

1st-3rd	warning
4 th	30-minute detention
5 th	warning
6 th	30-minute detention
7 th	warning
8 th	1-Hour Detention (Thursdays from 4:00-5:00pm)
9 th	warning
10 th	3-Hour Extended Detention (Thursdays from 4:00-7:00pm)
11 th	warning
12 th	1 day ISS
13 th	warning
14 th	3 days ISS
15 th	warning
16 th	5 days ISS
17 th	warning
18 th	Additional administrator action required

Students who refuse to serve detention, miss a detention or who arrive late to detention will receive an Extended Detention. Students who do not serve the Extended Detention will receive one day of In School Suspension (ISS). Tardies are not counted on a per class basis, but are inclusive of all classes. A student's everyday infraction count will start over at the semester break.

IDs

Every student must have a student ID on at all times while on campus. IDs should be worn above the waist in the front of the body. In the event a student forgets his/her ID, the student may purchase a temporary ID prior to 8:25 am and will pay the temporary ID fee listed below *without* accumulating an everyday discipline infraction. Students receiving ID violations after 8:25 am will receive the appropriate consequence for their everyday infraction as described above, and students will be charged the temporary ID fee.

Student ID violations are also cumulative throughout the day. Students must present IDs at school dances. In addition to the above consequences, a monetary consequence may be appropriate regarding IDs as shown below:

Replacement ID - \$5.00

Replacement lanyard - \$1.00

Temporary ID - \$1.00

Tardies

Definition: Students not physically within the confines of a teacher's room when the tardy bell rings are considered tardy. This includes returning from lunch.

Process: Passing period is 5 minutes. Music will be played for 4 minutes. When the music stops, students have 1 minute to get inside their next classroom. If a student is late to class they must get a tardy pass from the Front Office in order to enter the class.

Student Responsibilities:

- Be in the classroom before the tardy bell.
- Get an admit for a previous day's absence and get to 1st period class prior to the tardy bell. Attendance office opens by 7:45 a.m. Anyone in line when the tardy bell rings will be considered tardy and will need to get a tardy pass from the office in addition to the admit for being absent.
- Students more than 10 minutes late to class are marked absent.
- All students are expected to be in class. When in the hallway, the student should have a pass.

LIBRARY

The library is available before/after school and also during passing periods. No pass is needed for before and after school visits. During class time, a teacher pass is needed for the library. To work in the library during lunch, the student must go directly to library (not cafeteria) and check with a librarian concerning space availability.

Books

Student ID is required for book check-out.
Books may be checked out for two weeks at a time.

Loss/Damage

Student is responsible for loss or damage to material checked out in his/her name. The charge will be the replacement cost of the item. Refunds are available for books that are found and returned to the library in original condition. Fines must be cleared for final exemptions.

Online Subscription Databases and Online Library Catalog

Remote access through school webpage; Stop by the library or contact a librarian for required access passwords.

Computers

Available to individual students before and after school (40 desktop computers; use of computer is subject to availability). Computers are for school assignments only.
Classroom teacher makes arrangements for student to visit the library during class time.

Printers

Available for single copies of student created assignments; printing teacher created notes from PowerPoints, etc. will not be permitted.

The subject which the library media teachers facilitate is **information literacy**. The mission of the library is to ensure that students and staff are effective users of ideas and information. Helping students to achieve success is our goal. Please stop by the library to learn more.

Hours

Monday-Thursday 7:30am-5:00pm

Friday 7:30am-4:00pm

PARKING

1. Parking on campus is a privilege. CSISD is not responsible for damage or theft of the vehicle or anything within the vehicle.
2. All students who park a motor vehicle of any type must register their vehicle the first day the vehicle is on campus. Vehicles are to be registered on our campus website under the 'Students' tab. Payment is made with an Administrative Assistant in the Assistant Principal's office.
3. There is a \$25.00 fee for a parking permit. The fee for replacing lost or stolen tags will cost \$5.00 and require a signed note from parent/guardian.
4. Students are responsible for the security of their vehicle and permits. Therefore, they should not loan anyone their keys or permit. Any student found in violation of the regulation regarding transfer of permits will have the permit revoked immediately.
5. Each vehicle that parked on campus must have a hangtag that is interchangeable between cars. If changing vehicles or buying a new one, please notify the office immediately and register that vehicle.
6. Tickets will be issued for improper parking, parking in a staff space, speeding/reckless driving and/or failure to display a parking permit in the correct manner. The fine for a ticket is \$5.00 and must be paid within five (5) calendar days. For every third ticket, an everyday infraction will be issued.
7. For questions regarding tickets, please contact an Assistant Principal within two (2) days of receiving the ticket.
8. Rules governing vehicle use on campus:
 - a. Student vehicles are to be driven only on paved areas. The use of a vehicle in an unsafe manner (i.e. excessive speed, squealing tires, driving on grass, etc.) will result in loss of parking permit, parent conference, and in-school suspension (ISS).
 - b. Once a student arrives at school, the student is to park the vehicle and leave the parked vehicle immediately. Students are not to loiter in or around parked vehicles at any time before, during, or after school.
 - c. Falsification of information on the registration form will result in the loss of the privilege of parking on the campus for the remainder of the school year and a fine of \$25.00.
 - d. According to school board policy, "The district has the right to search a vehicle driven to school by a student and parked on school property whenever there is reasonable cause to believe it contains articles or materials prohibited by the district."
 - e. Parking privileges may be revoked for failure to comply with these regulations.

HOME ACCESS CENTER

STUDENTS: If you would like to be able to check your own grades online instead of asking your parents to do it for you, simply fill out the form and a Home Access Center (HAC) account will be set up for you.

1. This form is available on the school website: <http://cshs.csisd.org/>

CSHS Student Email

In order to set up an account for you in the Home Access Center, we need a current email address on file. Please complete the following form. Once the form is completed and your account is set up, you will receive an email with your login and password information within 24 hours. Thank you!

* Required

Last Name *

First Name *

Middle Name *

Student ID Number *

Email address *

By clicking submit you are certifying that the above information is true.

Submit

2. Once your account has been created, you will be able to login to your account using this screen.

To access HAC, go to <https://hac.csisd.org/homeaccess/>.

Home Access Center

existing users log-in here.

new users click here.

if you forgot your username or password click here.

Username: *

Password: *

Log In

Forgot My Username or Password

Welcome to the Home Access Center. To begin, please enter your **username** and **password**.
If you do not have a username and password for Home Access Center, you can register by clicking [here](#).

The Navigation Pane on the left side of your Home Screen contains links that will take you to different parts of HAC.



Daily Summary	Displays attendance and schedule information for the current date, classwork for the current week, and discipline incidents in which the student was involved for the current week.
Schedule	Displays the student's schedule for the entire year. Dropped courses may also be displayed.
Attendance	Displays a month view of the student's attendance. A color legend displays above the calendar. Individuals can hold the mouse cursor over a day to display detailed absence information for the day.
Classwork	Displays the date due, date assigned, assignment, category, points, and score information for each Gradebook assessment for a class.
Interim Progress	Displays the student's interim progress report.
Report Card	Displays the student's report card information.
Transcript	Displays the student's unofficial transcript.
Test Scores	Displays all tests in the Test Center for the student.
Registration	Displays basic demographic information for the student.
My Students	Displays a list of your students in CSISD.
My Profile	Displays your profile information and allows you to change your password.

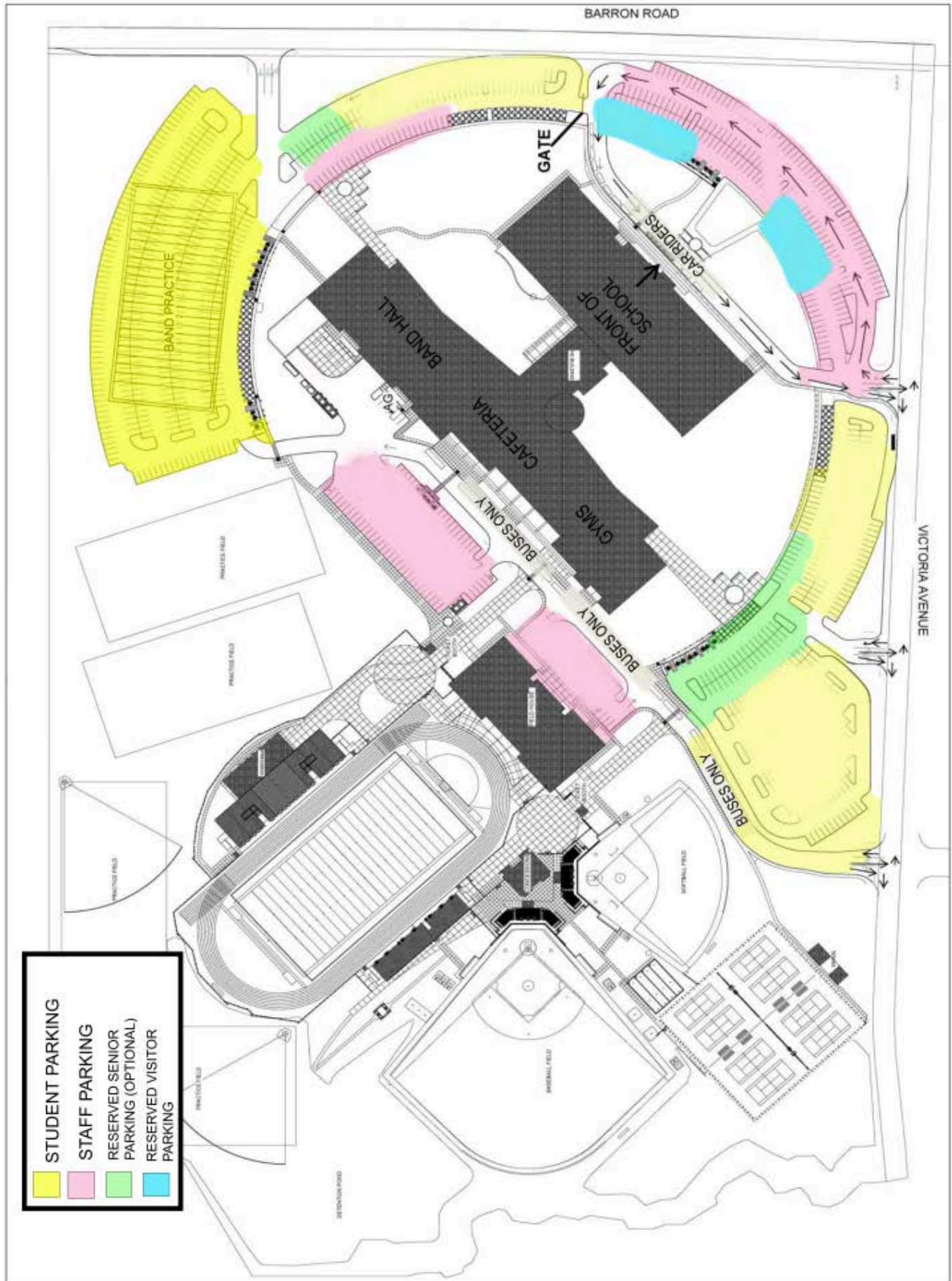
3. Once inside your account, you will be able to access all of the information you see in the table on the left.

SPORTS/CLUBS/ORGANIZATIONS

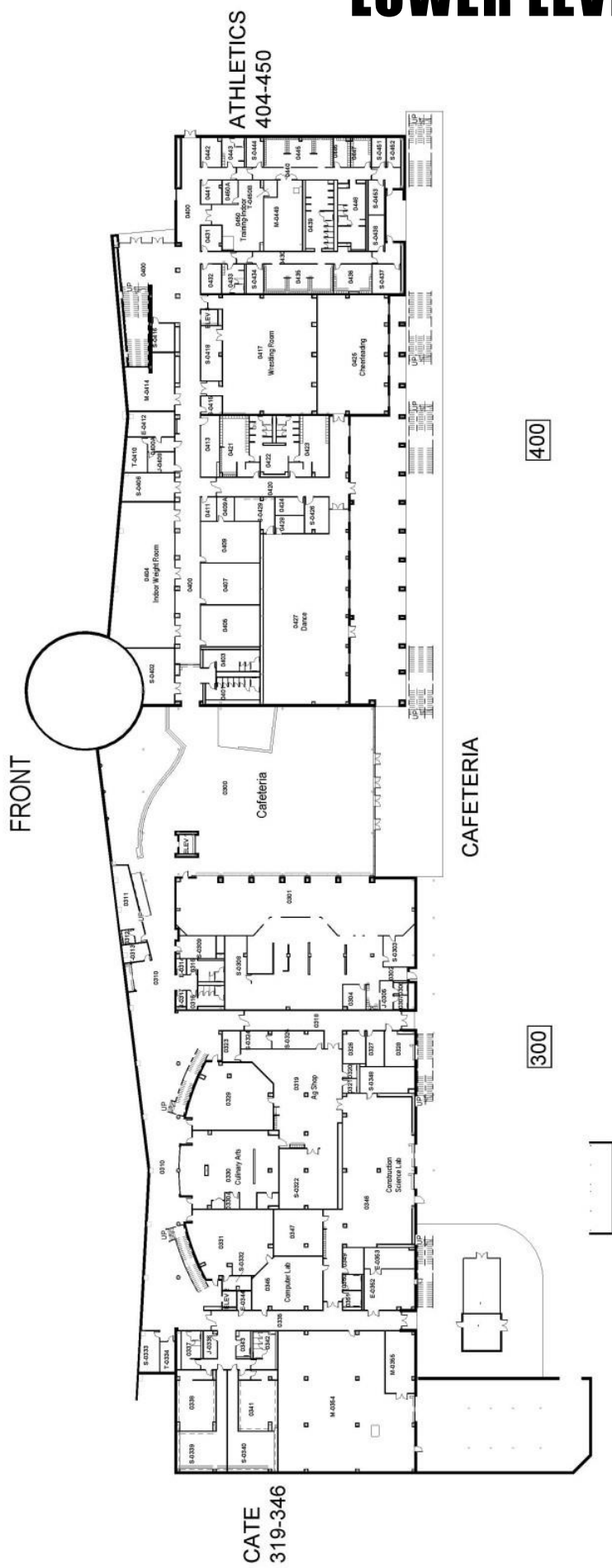
Anime Club	Dr. Wellmann
Art Club	Mrs. Norton
AVID	Mrs. Doles
Band	Mr. Eaks
Baseball	Coach Holder
Book Club	Mrs. SanAngelo
Bicycling/Mountain Bike Club	Mrs. Foster
Boys Basketball	Coach Sullivan
Boys Cross Country	Coach Wellmann
Boys Golf	Coach Edwards
Boys Powerlifting	Coach Frashure
Boys Soccer	Coach Mercer
Business Professionals of America	Mr. Rhodes
Cheerleaders	Mrs. Keough
Choir	Mrs. Etheredge
Cougar Mentors	Mrs. Reed
Cougar Pals	Mrs. Poprik
Criminal Justice Club	Mr. Langwell
Culinary Club	Mrs. Parsi
Debate	Mr. Lehrmann
Drama Club	Mrs. Creel
FCA	Coach Walsh
FCCLA	Mrs. Thibodeaux
FFA	Mrs. Clinkscales
Football	Coach Huff
Gay Straight Alliance	Mrs. Laffin
German Club	Ms. Tuggle
Girls Basketball	Coach Symank
Girls Cross Country	Coach Munson
Girls Golf	Coach Rackley
Girls Powerlifting	Coach Frashure

Girls Soccer	Coach Pryor
Guitar Club	Mr. Barone
Gymnastics	Mrs. Kouba
HOSA	Mr. Wetterman
Interact Club	Mrs. Vance
International Thespian Society	Mrs. Creel
Latin Club	Mr. Watson
LEO club	Mrs. Akin
Media Tech	Mr. Green
National Honor Society	Mrs. Costenbader
Newspaper	Dr. Wellmann
Orchestra	Mr. Hooper
Photography Club	Mr. Green
Pro Life Club	Mrs. Vizquerra
Robotics	Mrs. Conlin
Science Bowl	Mrs. Akin
Skills USA	Mr. Oualline
Softball	Coach Gibson
Strutters	Mrs. McBride
Student Council	Ms. Todd
Tennis	Coach Stricker
Texas French Symposium	Mrs. Baillie
Theater	Mrs. Creel
Track (Boys)	Coach Hancock
Track (Girls)	Coach Munson
UIL Academic Team	Mrs. Falco
Volleyball	Coach Faigle
Wrestling	Coach Mincher
Yearbook	Mrs. Laffin

SITE MAP—PARKING—TRAFFIC

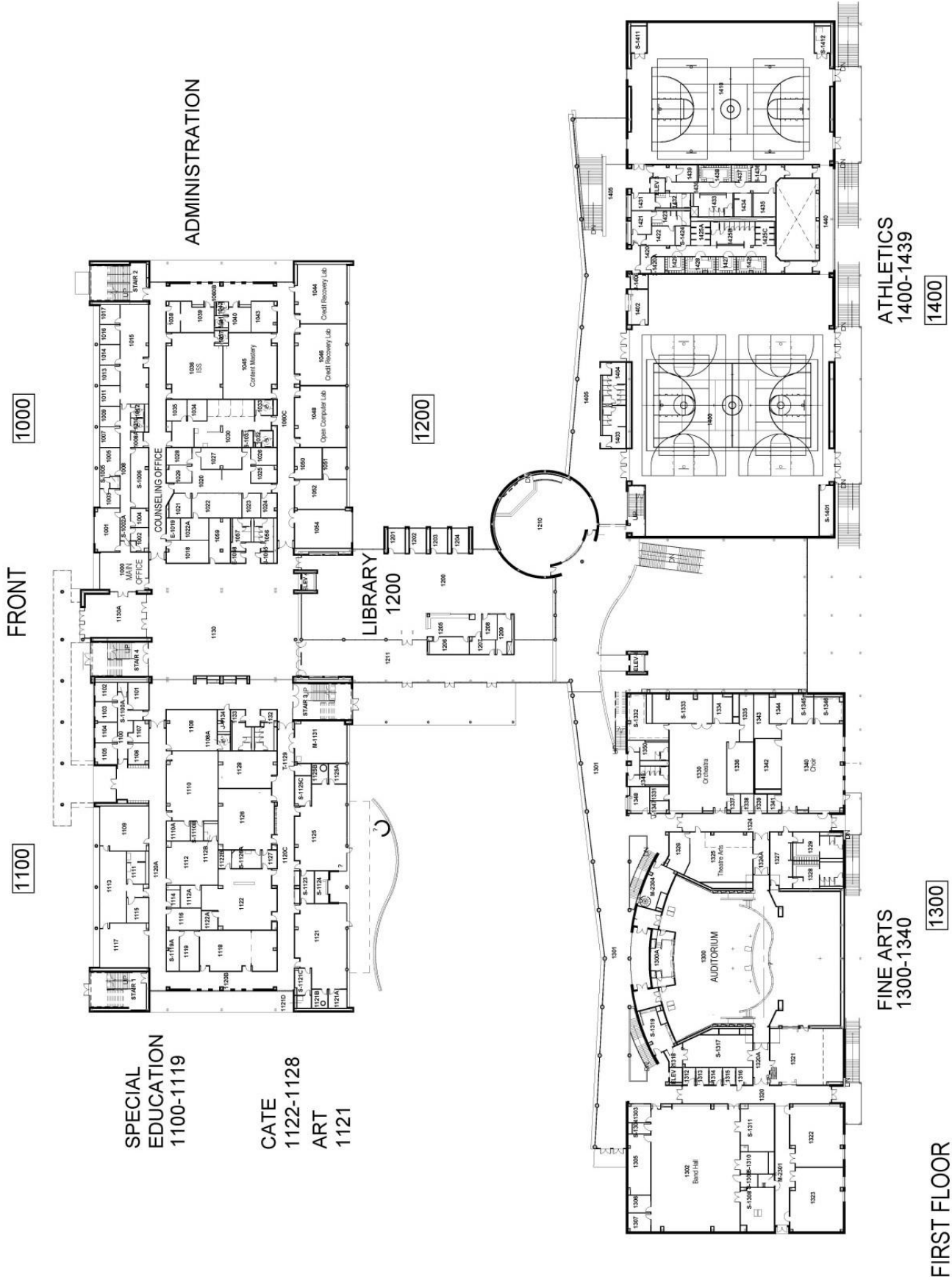


LOWER LEVEL-BACKWING

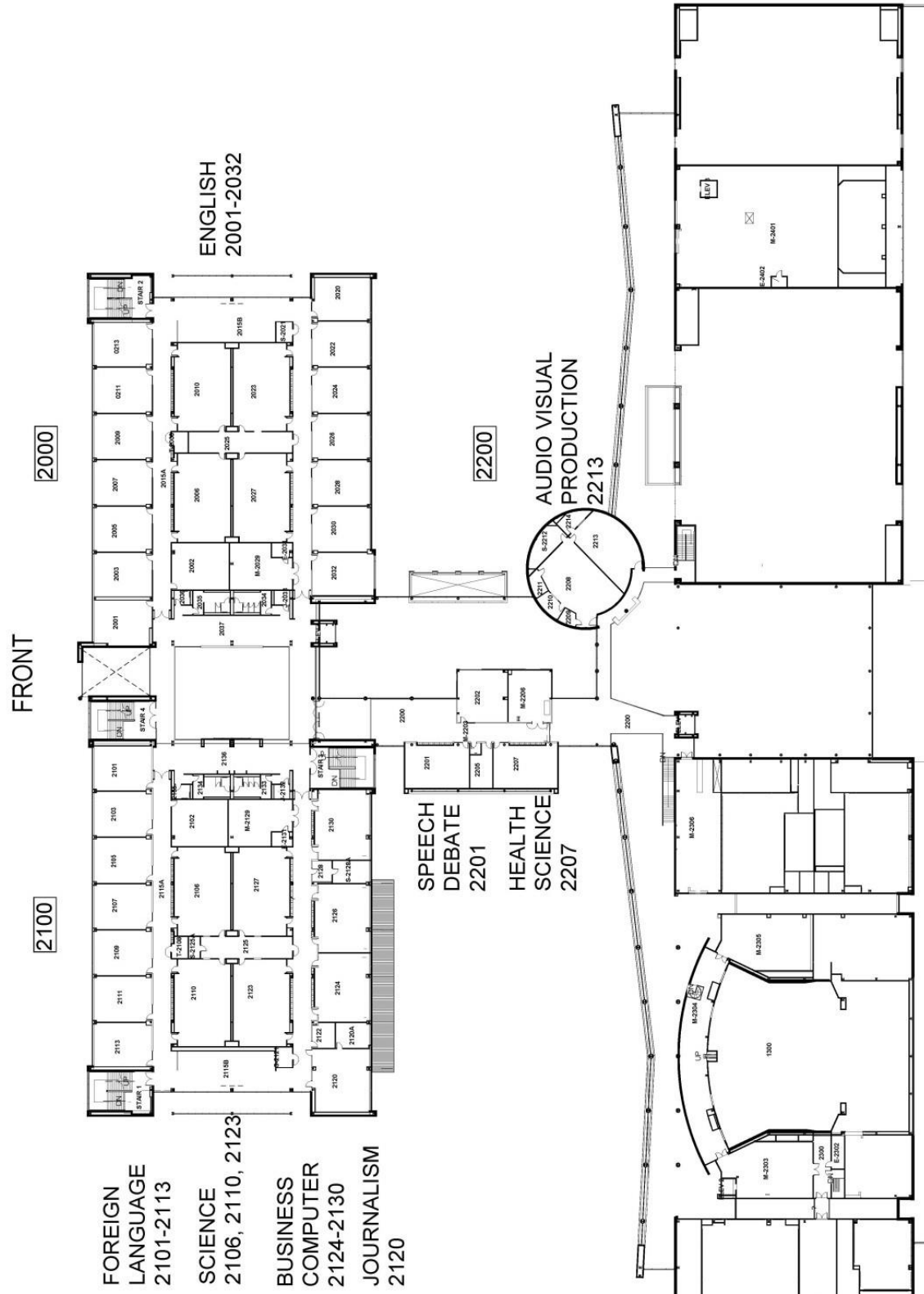


LOWER LEVEL

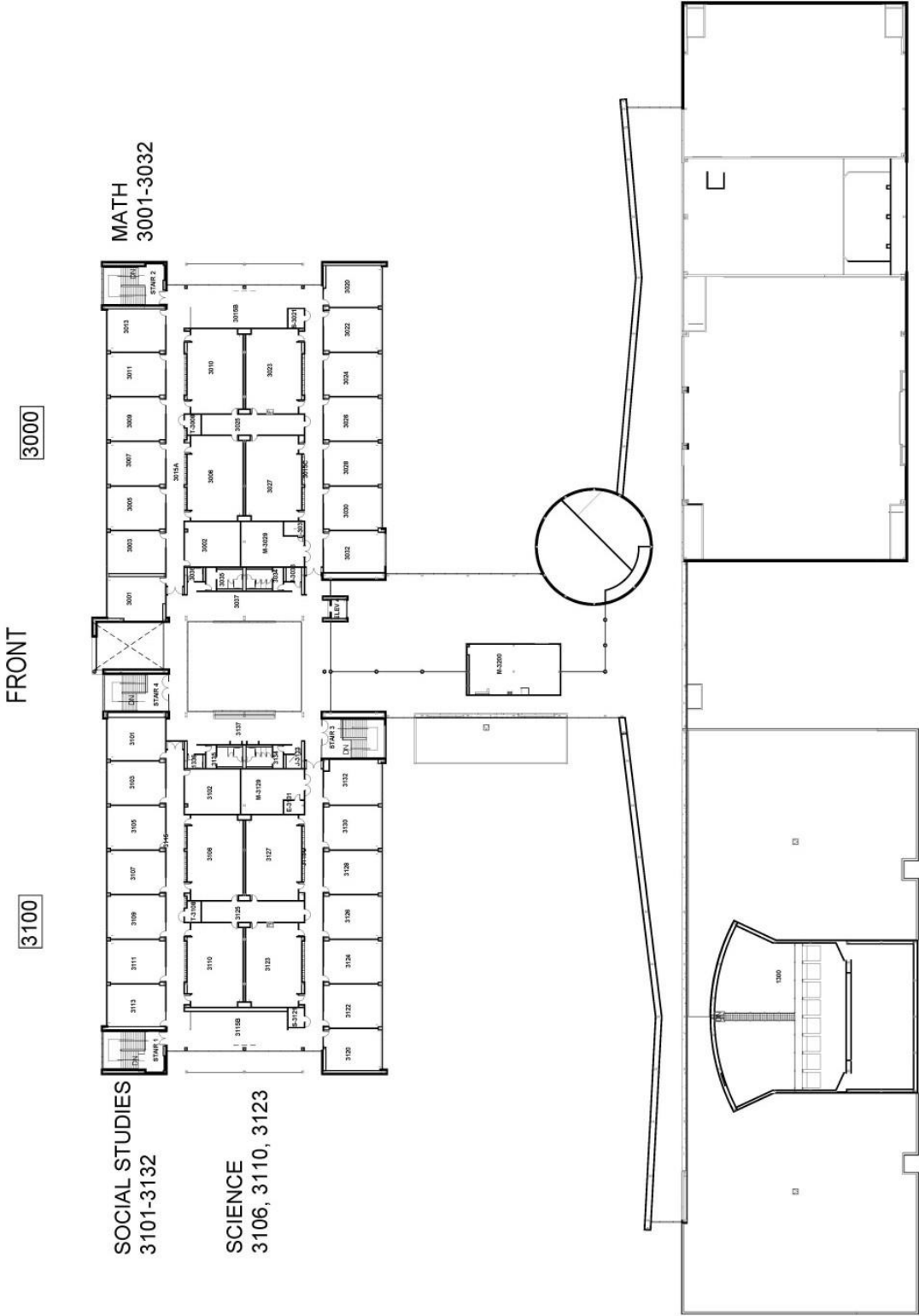
FIRST FLOOR



SECOND FLOOR



THIRD FLOOR



THIRD FLOOR